

H U N T E R

Legend 37



COMMITTED TO BETTER ENGINEERING

The Comfort of Performance



*D*esign innovation and structural engineering are cornerstones of the Legend 37. Coupled with an unparalleled list of standard features, they create a comfortable, luxurious and exciting craft.

Warren Lulars, Hunter's CEO, demands advanced sailing performance—both from efficiency to ease of handling. The hull, though spacious, allows a minimum of wetted surface for improved performance. Maximum stability, increased lift and reduced draft are accomplished by our Bulb-wing keel. Furthermore, unlike the common wing keel, Hunter's Bulb-wing combines the lower center of gravity and hydrodynamic shape of a bulb with smaller wings, placed at the aft end of the

keel that vastly improve the boat's ability to free from running aground. The double spreader fractional rig provides a powerful main that is easily reefed, complemented by a smaller headsail with tight sheeting angles that is both efficient and easy to handle. The hull, keel and sail plan provide comfort in performance in a wide variety of conditions, and allows you to enjoy sailing at its best.

"Cruise Pac" features include furling system, sails, sail covers, Dutchman™ mainsail flaking system, knotmeter, depthsounder, VHF radio, stereo, safety gear and much more!

The Legend 37, now for "sail" at your Hunter dealer.





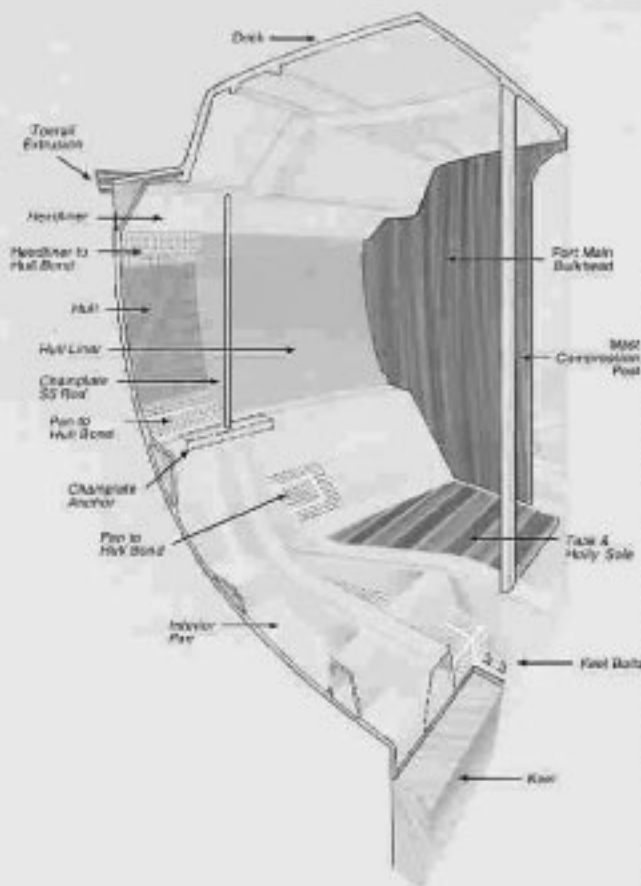
Enjoy an interior that allows you to move without leaving your vacation home. The warm comfort of this generous interior provides a layout ideal for a family or two couples. Unlike other boats with their cave-like cramped aft cabins, the Legend 37 enjoys an island double berth centralized in a huge private aft cabin, designed to maximize your sleeping comfort.

The galley design blends generous countertop space and storage with a three-burner natural gas stove

and oven, double stainless sinks and a high-volume icebox. Above the galley, two large aluminum framed ports provide great ventilation.

The main salon and V-berth areas are drawn together or separated by the use of the french doors that accent the open, airy feeling of the main cabin. Additionally, the generous use of skylights, large ports, light fabrics and beige gel-cote enhance the spacious feeling and provide a comfortable surrounding for your family and guests.





sure a superior product. Maximum strength is achieved with our bonded full-length internal frame and stringer system to increase stiffness without adding excess weight. The chain plates then are anchored to the main "muscle" of this frame system to carry the rig loads of these strong performance cruisers.

The frame system also allows the interior volume to be maximized to create a delightful cabin. The engineering of our warm, comfortable interiors employs the same computer technology as our hull, keel and rig designs. Computer numerically controlled equipment precisely cuts and shapes everything from bulkheads to trim. Many builders must purchase pre-cut trim and cabinets that restrict the type of innovation we enjoy.

With our tremendous purchasing volume of quality materials and brand name components, plus our highly efficient production-line techniques, our costs for materials and labor to produce a quality sailboat are held to a minimum. These advantages allow us to avoid the high prices found with our competitors, who would like you to believe that higher prices are their proof of quality.

F

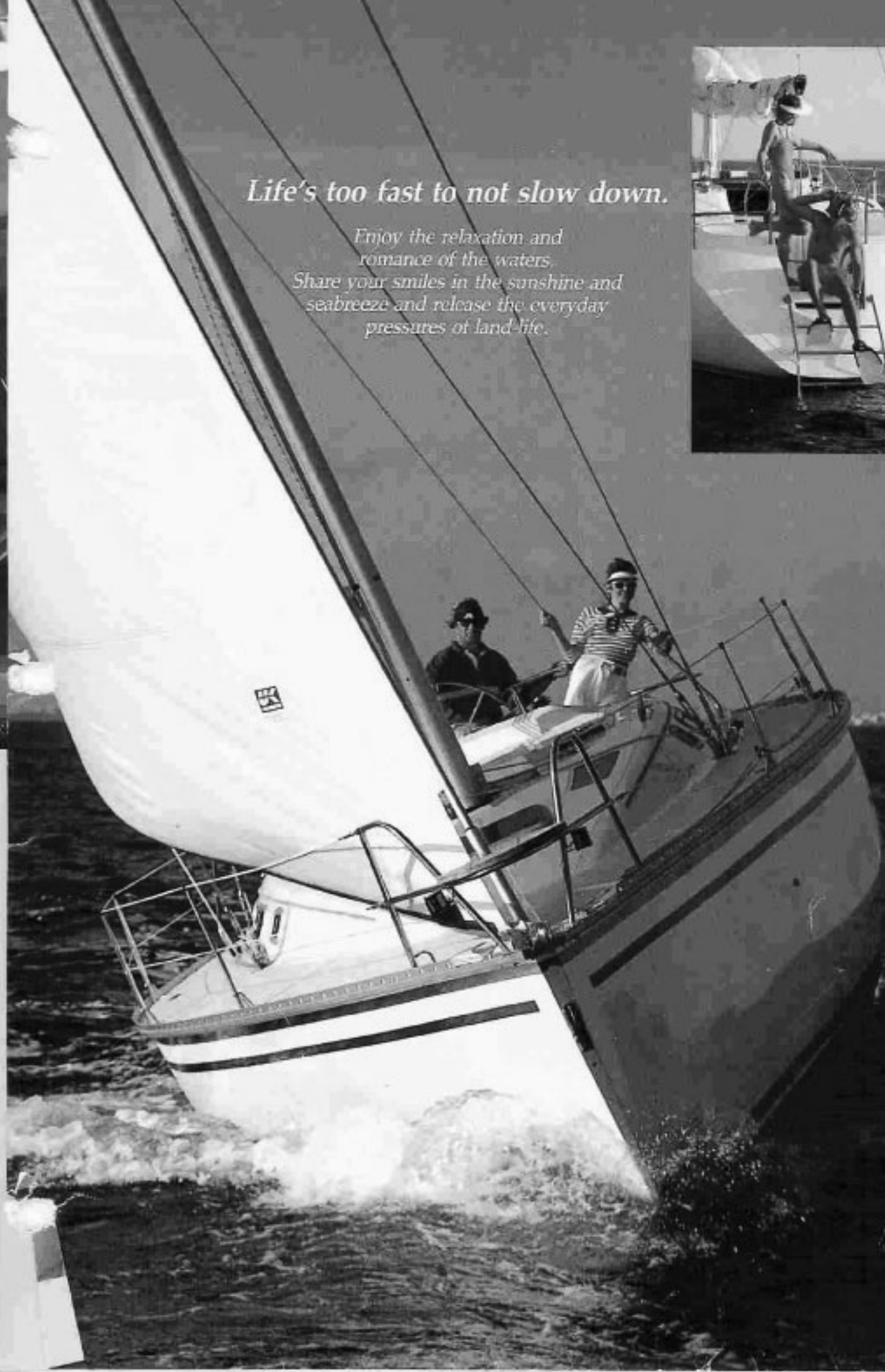
or generations, the Luhrs family has been a part of the American boat building industry—starting with sailing ships in the 1870s. The knowledge and experience acquired through all those years has developed Hunter Marine's position of industry-leading innovation, technology and design. Our modern manufacturing plant and efficient production techniques, combined with constant and stringent testing, keep Hunter Marine at the industry forefront. Warren Luhrs, Hunter's CEO, is himself often at sea, circumnavigating the world, testing the technology of today—and the future.

The Hunter Design Group, headed by Warren Luhrs, includes an aerospace engineer, industrial designer and an architect. The superb accuracy and efficiency of their unique CAD (computer-aided design) system reduces the trial and error guesswork and compromises most manufacturers face. Hunter's performance testing reaffirms the accuracy of engineering and production to as-



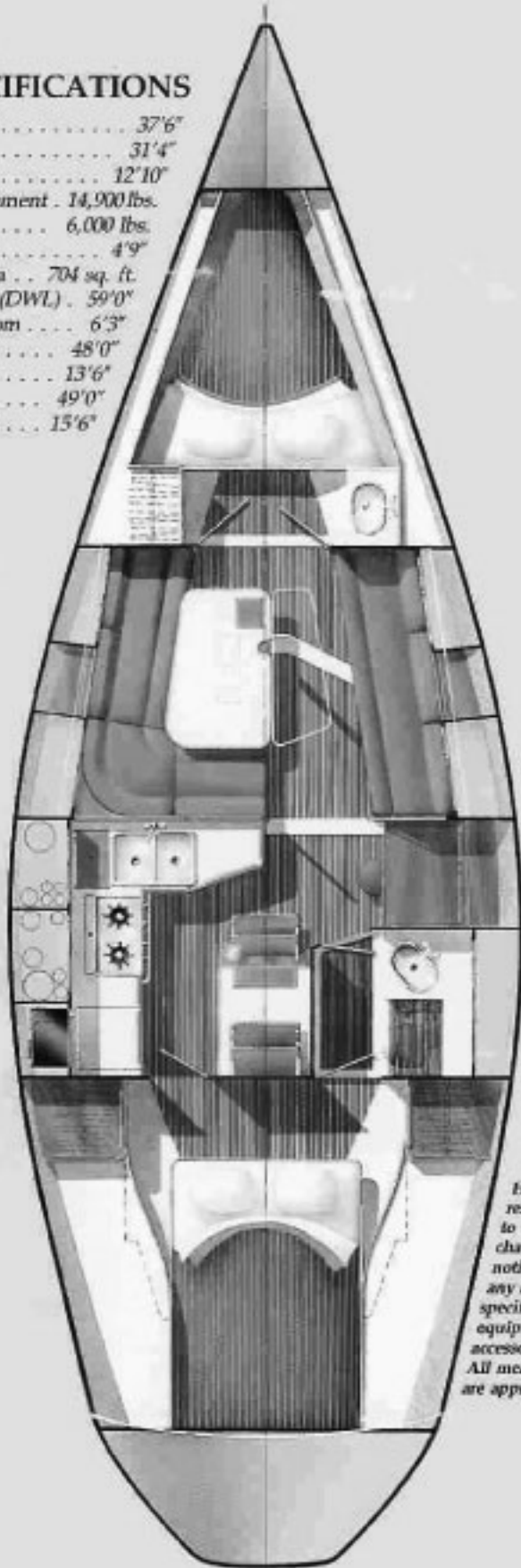
Life's too fast to not slow down.

*Enjoy the relaxation and
romance of the waters.
Share your smiles in the sunshine and
seabreeze and release the everyday
pressures of land-life.*



SPECIFICATIONS

LOA	37'6"
LWL	31'4"
Beam	12'10"
Displacement	14,900 lbs.
Ballast	6,000 lbs.
Draft	4'9"
Sail Area	704 sq. ft.
Mast ht (DWL)	59'0"
Headroom	6'3"
I	48'0"
J	13'6"
P	49'0"
E	15'6"



Hunter Marine reserves the right to modify or change, without notice, any materials, specifications, equipment and/or accessories. All measurements are approximate.

CRUISE PAC

For years Hunter Marine has offered the most complete accessory and marine hardware package in the industry. When you purchase a Hunter boat, your buying power is at its best. Hunter goes out of its way to be sure that you have everything you need to set sail the day of your commissioning. Check the listings and compare for yourself why Hunter is your best buy in the sailboat market today. Call or write Hunter Marine today for the name of your nearest Hunter Marine dealer or for any additional information you may require.

Hunter Marine—"Committed to Better Engineering."

RIGGING:

Dacron sails
Main with Dutchman™ Sail Flaking System
Sail cover
Furling 110% genoa
Jiffy reefing, main
Sheets
Two two-speed self-tailing sheet winches
Two two-speed self-tailing halyard winches
Sheet stoppers
Triple line organizers (2)
Internal halyards, pre-stretched dacron
Mainsheet traveler
Inboard recessed genoa tracks with cars
Aluminum mast and boom
Windex®

ELECTRONICS:

VHF radio
Digital knotmeter
Digital depthfinder

DECK:

Bow pulpit, stainless steel
Stem rail, stainless steel
Swim ladder, stainless steel
Fender rack
Double lifehakes
Mooring cleats
Anodized aluminum through-bolted toe rail
Cabin handrails
On-deck anchor well
Flush-mounted cabin skylights
Cockpit seat lockers
Two-tone molded-in non-skid deck

COCKPIT:

T-shaped cockpit
Walk-through transom
Pedestal steering with engine controls and lighted compass
Pedestal guard
Brake
Wrap-around coamings
Contoured helmman seat

ELECTRICAL:

Dual 12V battery with switch

Battery charger
European running lights
Bilge pump, automatic
110V dockside power with 50' cord
Multiple AC outlets in cabin
Mast steaming lights and anchor light
Cabin lights

CABIN:

Aft cabin with large double bed
Teak and holly cabin sole
Dinette table with leaf converts to double berth
Total sleeping for seven
Opening ports
Tinted forward hatch
Tinted slider hatch
Tinted mid-cabin vent hatch
Three full hanging lockers
Fully enclosed head with shower
Vanity with sink in forward cabin
AM-FM stereo with speakers
Navigator's station
Chart table light
Fabric cushions

GALLEY:

Stainless steel double sink
Hot and cold pressurized water system
CNG stove with oven
High-pressure laminated countertop
Icebox
Freshwater tank (71.5 gal.)

AUXILIARY POWER:

Diesel engine, freshwater cooled, 34hp
Fuel tank (33 gal.)

GENERAL SAFETY GROUP:

Anchor and line
Life jackets
Signal horn
Throwable device
Two fire extinguishers
Emergency tiller
Chapman's Piloting, Seamanship and Small Boat Handling

86. = 7

HUNTER

HUNTER MARINE CORPORATION
Post Office Box 1030
Alachua, Florida 32615